

Details of Shelters in Buildings

100	101	102	103	104	105	106
107	108	109	201	202	203	204
205	206	207	208	209	211	212
213	214	215	216	217	301	302
303	304	305	306	307	401	402
403	404	405	407	408	409	410
411	501	502	503	504	505	506
507	508-9	604	605	802	901	902
905	906	1002	1004	1005	1102-5	1300 A+B
				1401	1501	Exit

Exit the shelters only after 10 minutes or according to the Home Front Command's announcement, whichever is stricter.

100

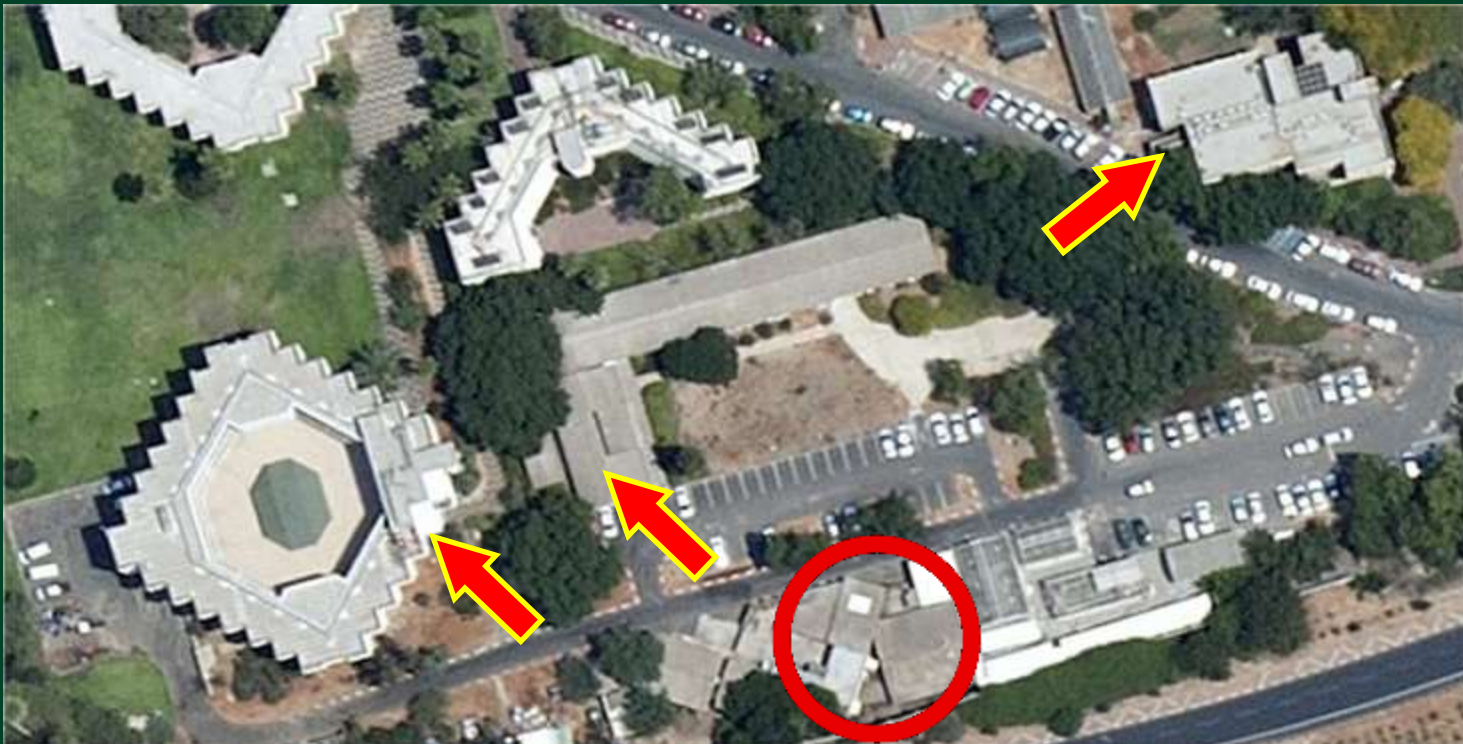
Animal research center

Shelter at external
Mamad, 12 sqm

Most protected space: 101 Sherman Shelter or 105 Exodus Shelter

Places:
None

Highlights: None



Back >>

101

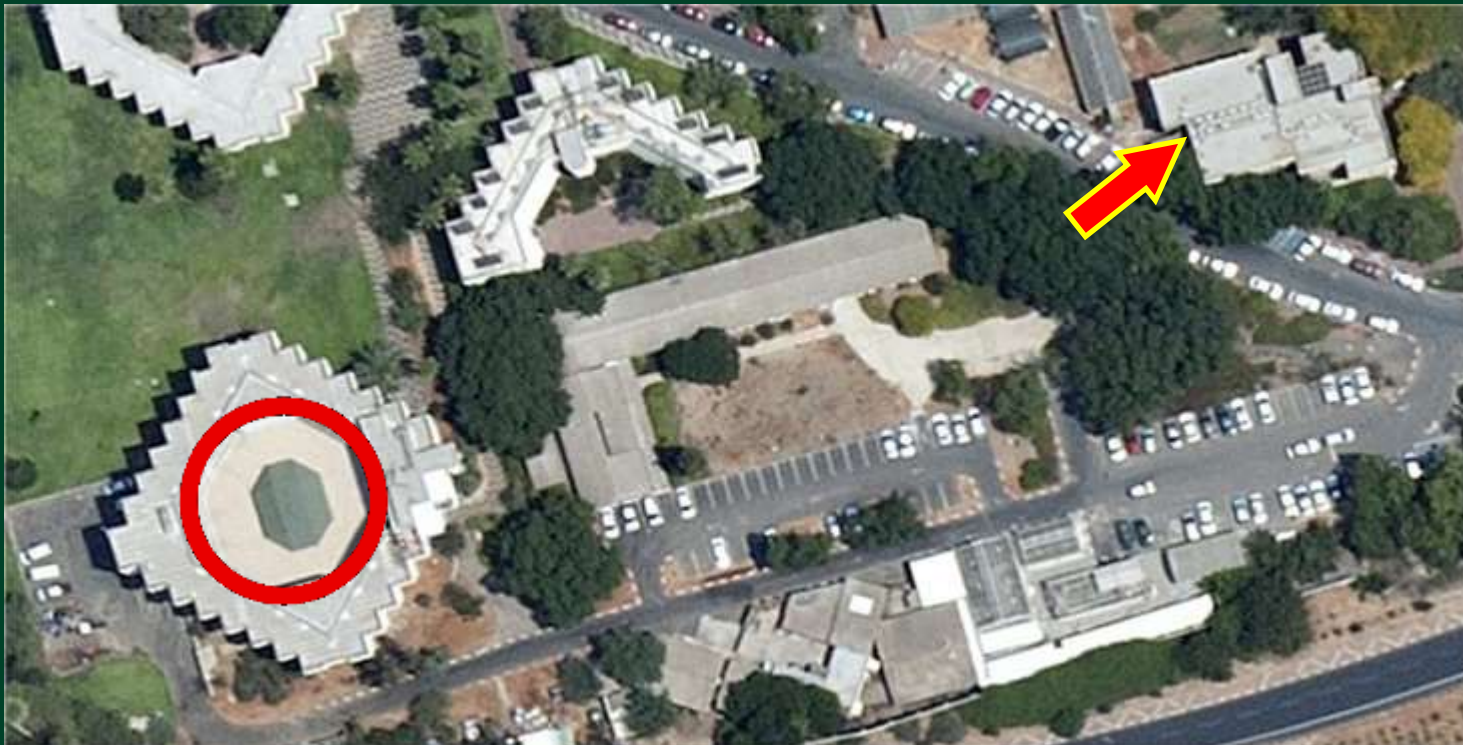
Electra's dormitories

Shelter in the basement. 70 sqm

Most protected space: Shelter in Exodus 105 or Shelter in the 103 dormitories

Places:
None

Highlights: From the optometric clinics – Use the western exit to get out of the building and straight into the staircase to the shelter. You can also protect yourself in the inner clinics at the western corridor.



Back >>

102

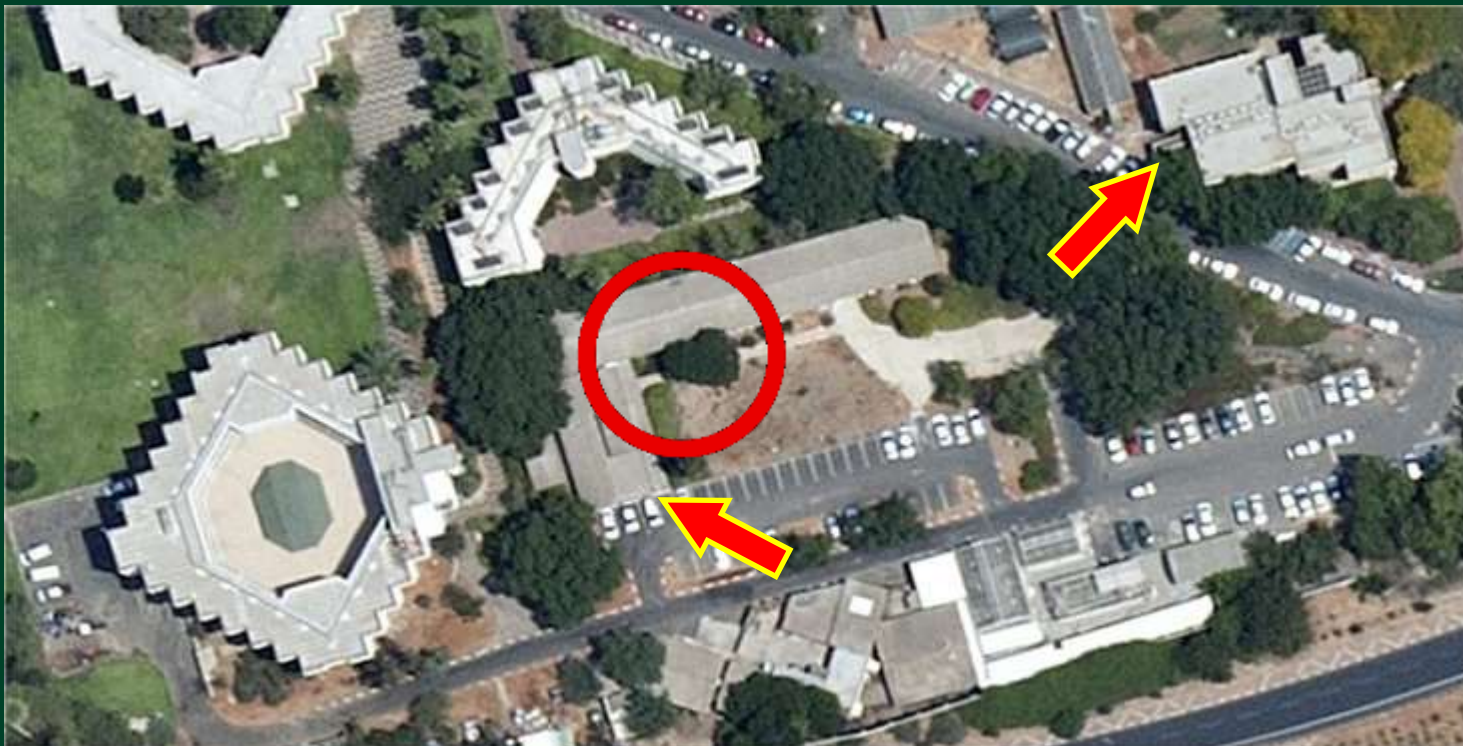
Rappaport labs (BIRAD)

Shelter at external
Mamad, 12 sqm

Most protected space: Shelter in Exodus 105

Places:
None

Highlights: None



Back >>

103

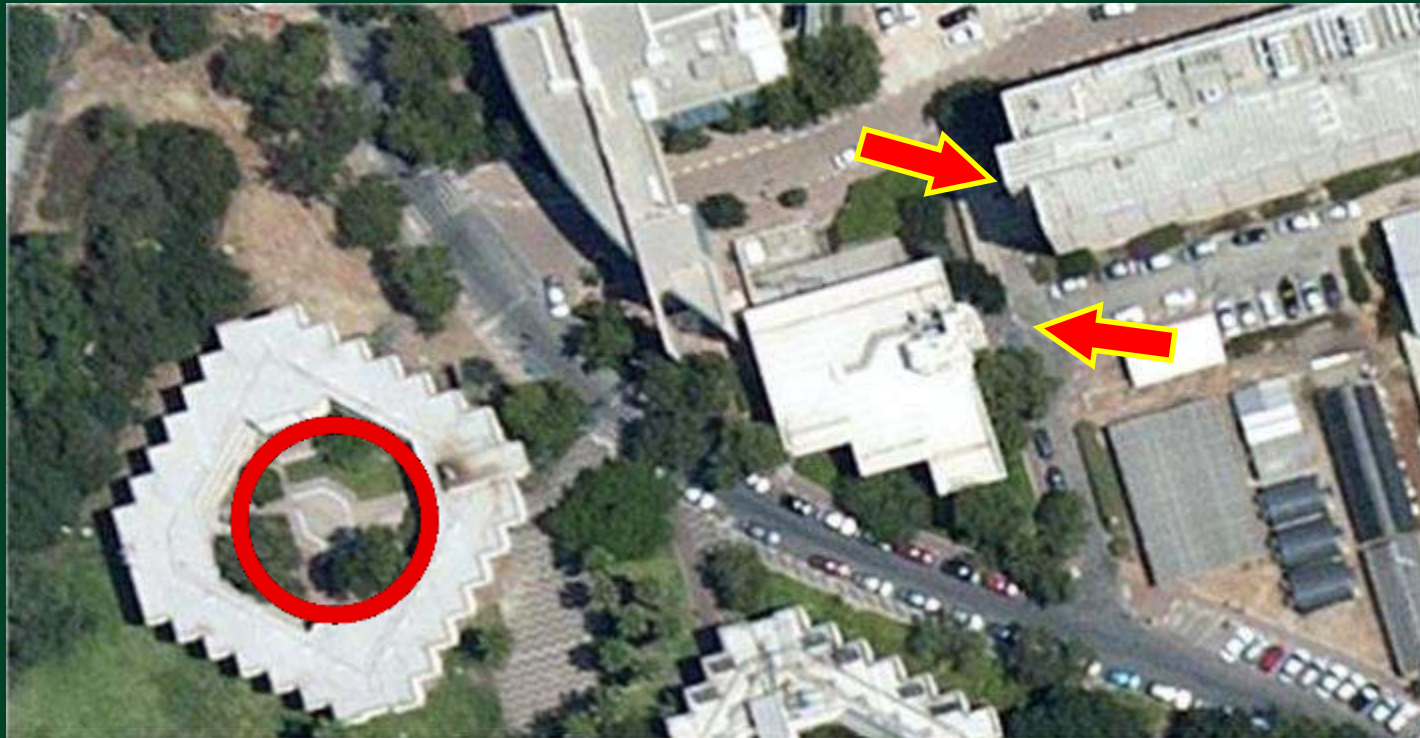
Electra's dormitories

Shelter in the
basement. 77 sqm

Most protected space: Shelter in Physic building 202 or
basement level in Fraiman 201.

Places:
None

Highlights: None



Back >>

104

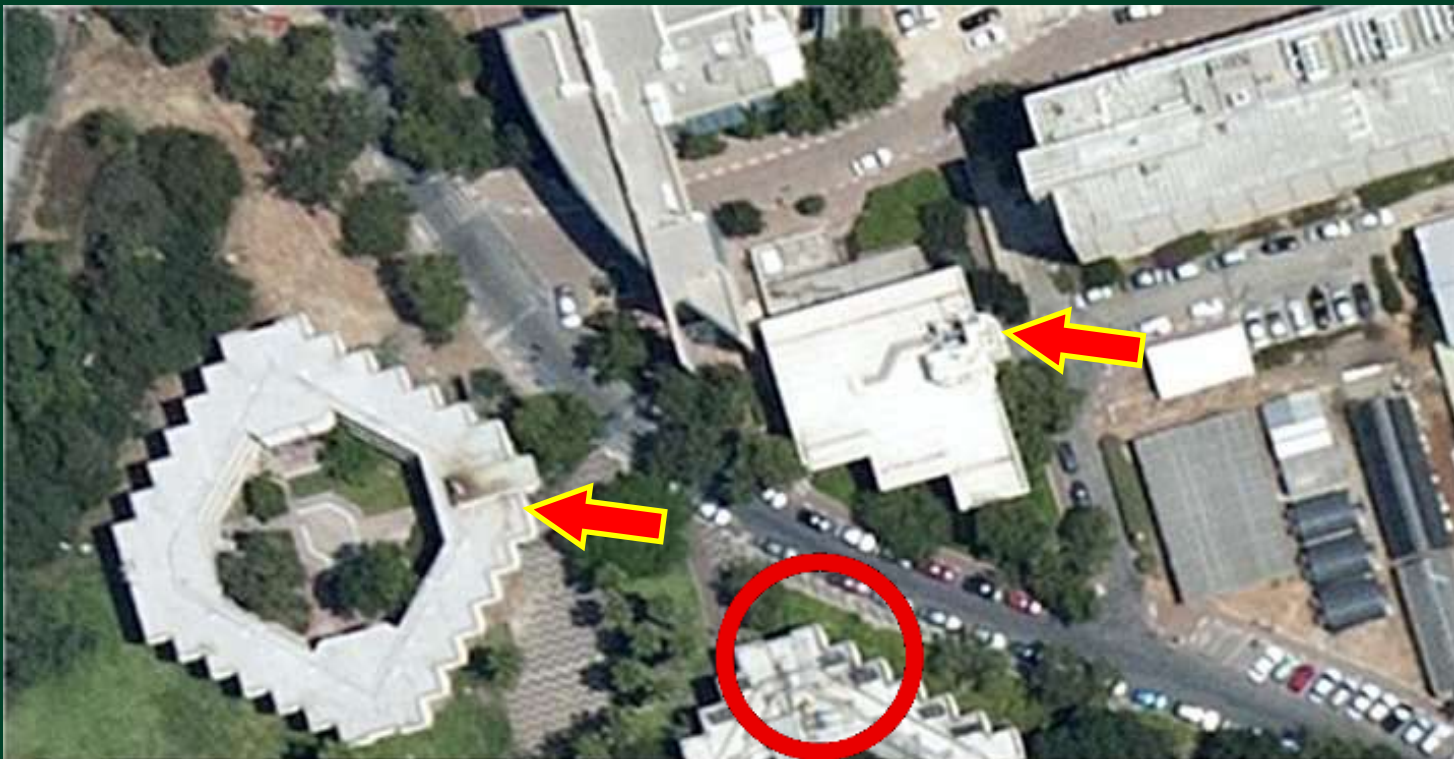
Electra's dormitories

No Shelter in this location

Most protected space: Shelter in basement level in Fraiman 201 or shelter in Gaon dorms 103.

Places:
None

Highlights: None



Back >>

105

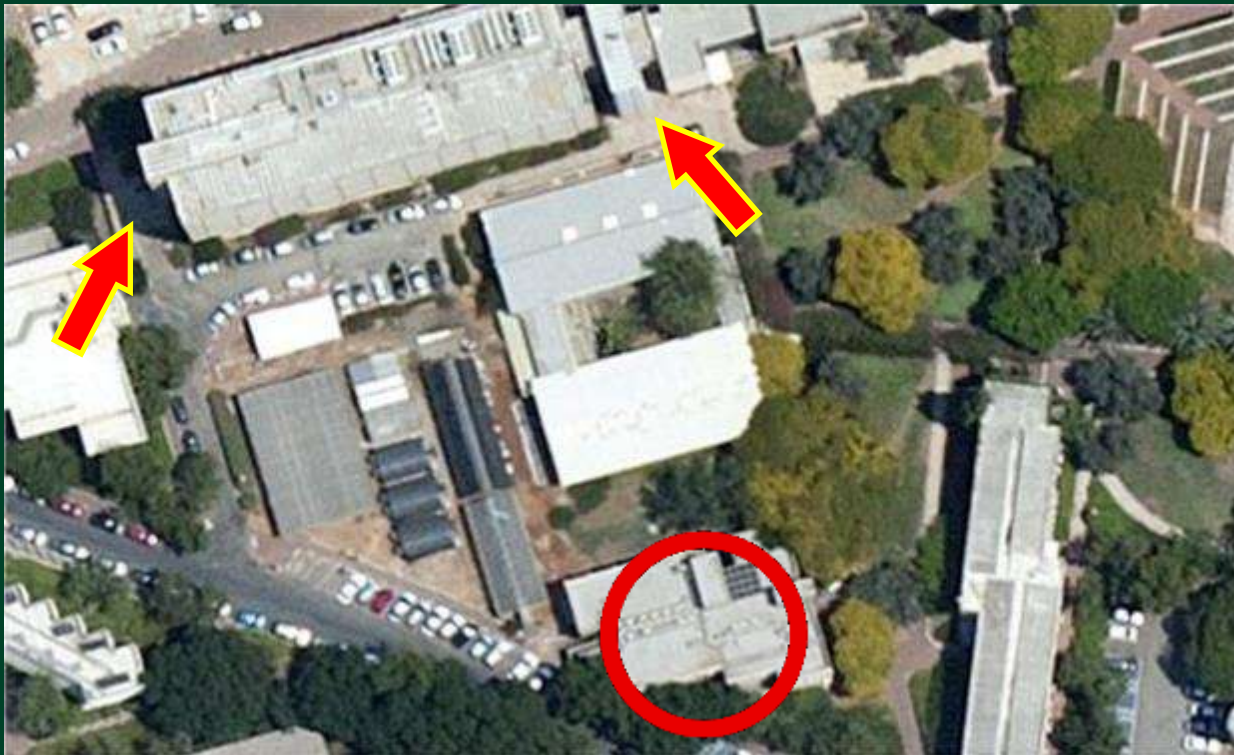
Exodus classrooms

Shelter in
basement. 101 sqm

Most protected space: Shelter in Physics building 202 or
basement level in Fraiman 201.

Places:
None

Highlights: Opening the shelter by the Maintenance Dept.



Back >>

106

Electra's dormitory

No Shelter at this location.

Most protected space: Shelter in the basement of Exodus 105.

Places:
None

Highlights: Electra owns a storage room (in the east side) that can be used as a protective place.



Back >>

107

Student's building

No Shelter at this location.

Most protected space: Shelter in the basement of Exodus 105

Places:
None

Highlights: none.



Back >>

108

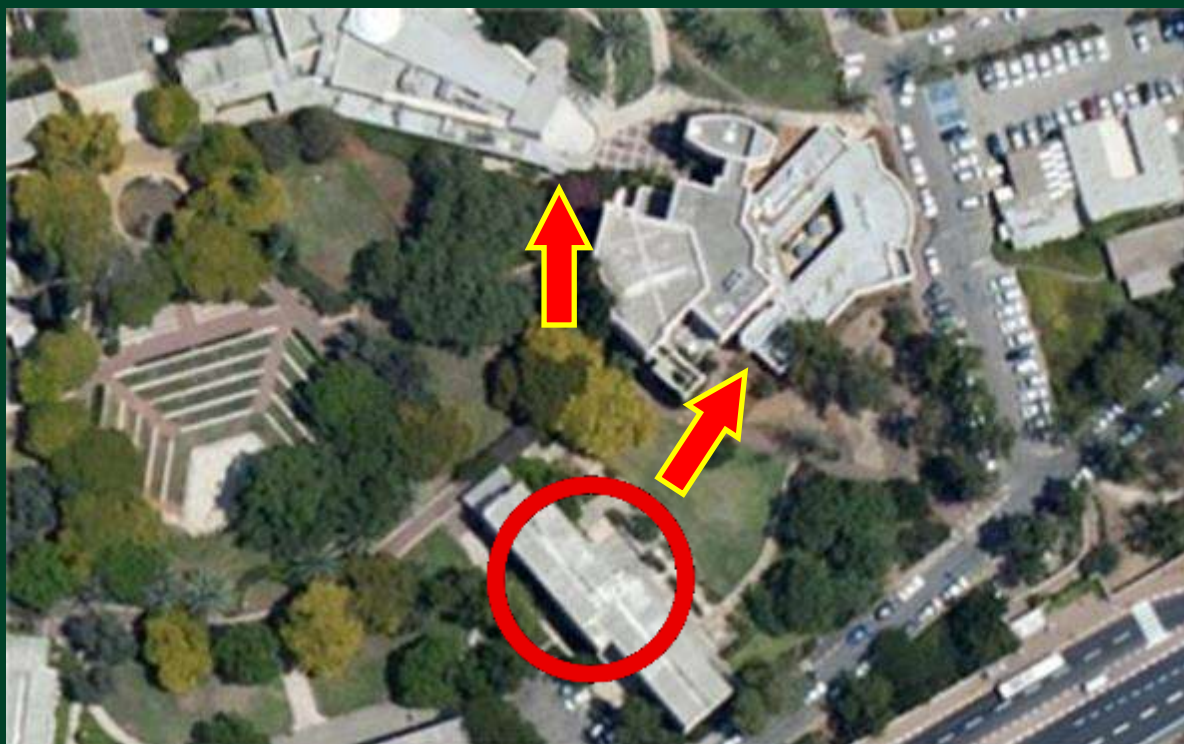
Electra's dormitory

No Shelter at this location.

Most protected space: Storage room in the University Youth Center unit, or behind the Schleifer synagogue 304 or a small shelter in Feldman 301.

Places: 75 sqm.

Highlights: Opening the room behind the synagogue by David 054-4528683/ opening University Youth Center storage room by the UYC staff.



Back >>

109

Lauterman building.

No Shelter at this location.

Most protected space: The south underground corridor or the shelter in Physics 202.

Places: 55 sqm.

Highlights: Coordinate the opening of the corridor with Prof. Kraus – AIM lab (Tel. 8762)



Back >>

201

Frailman Environmental Biology

Shelter in
basement. 29 sqm.

Most protected space: The lower floor of the building.

Places: 294
sqm.

Highlights: Air filtered



Back >>

202-3

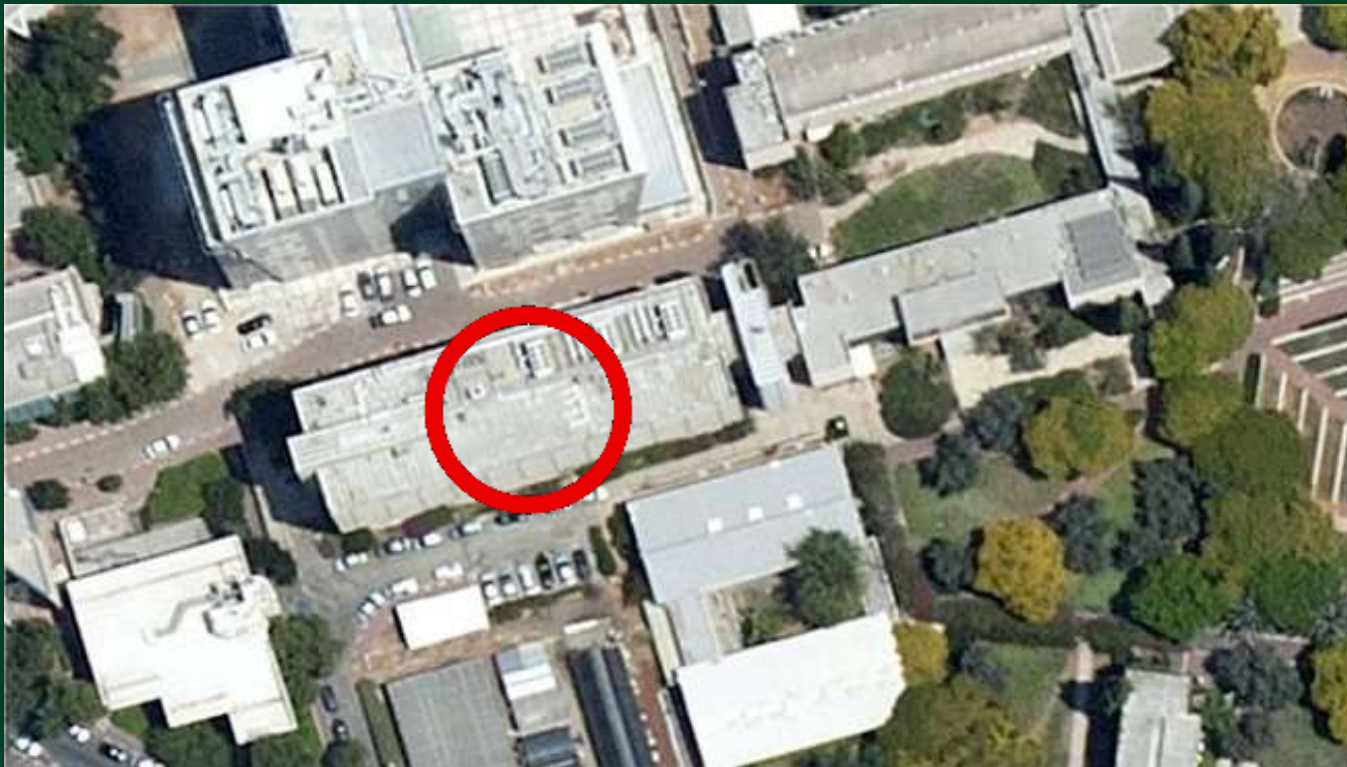
Physics research institute

Shelter in
basement. 286 sqm.

Most protected space: Internal corridors at the 1st-4th floor.

Places: 556
sqm.

Highlights: Coordinate the opening of the shelter with the Maintenance dept or the Archeology dept (8299)



Back >>

204

Gonda medical diagnostic center

Shelter in the basement. 55 sqm.

Most protected space: The 1st floor corridor

Places: 74 sqm.

Highlights: The shelter is located in the south wing of the building, under the elevator. It is being used by the cleaning company (phone 8693).



[Back >>](#)

205

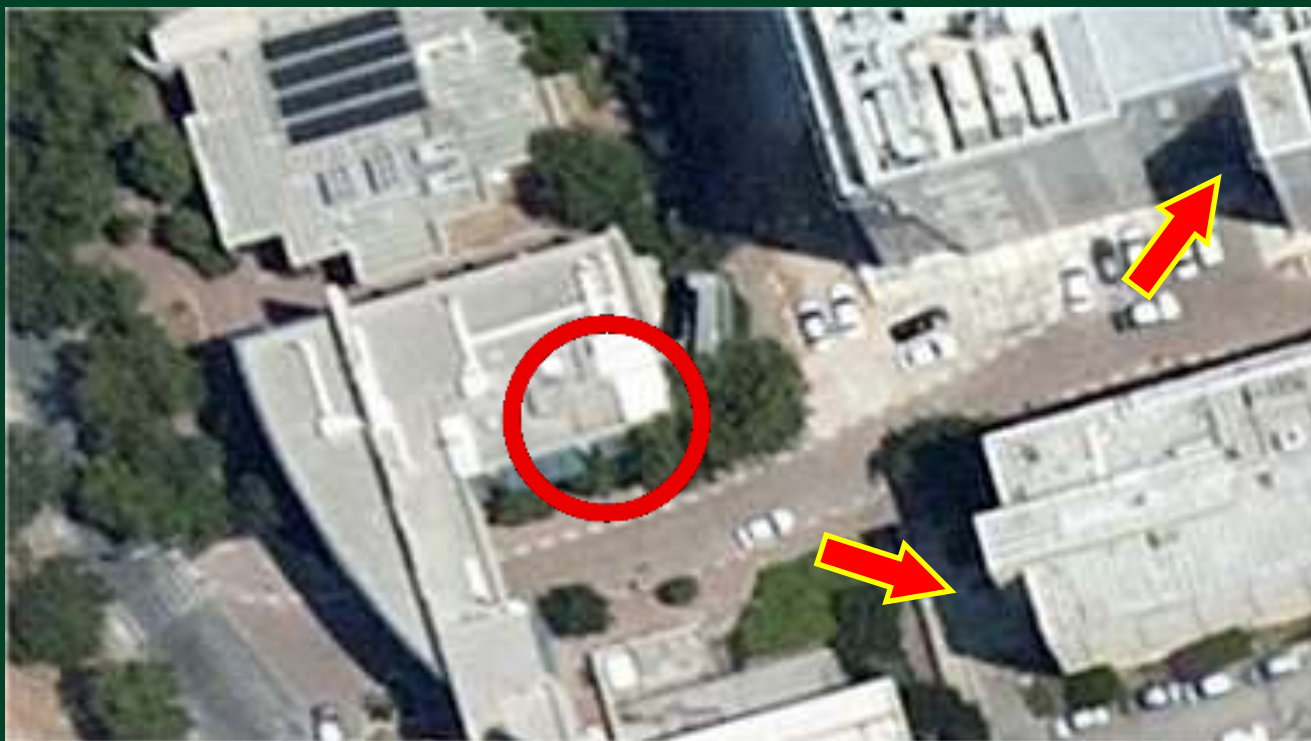
Lunenfeld life science center

No Shelter at the location.

Most protected space: Physics 202 basement shelter or the parking floors at Nanotechnology 206.

Places:
None.

Highlights: None



Back >>

206

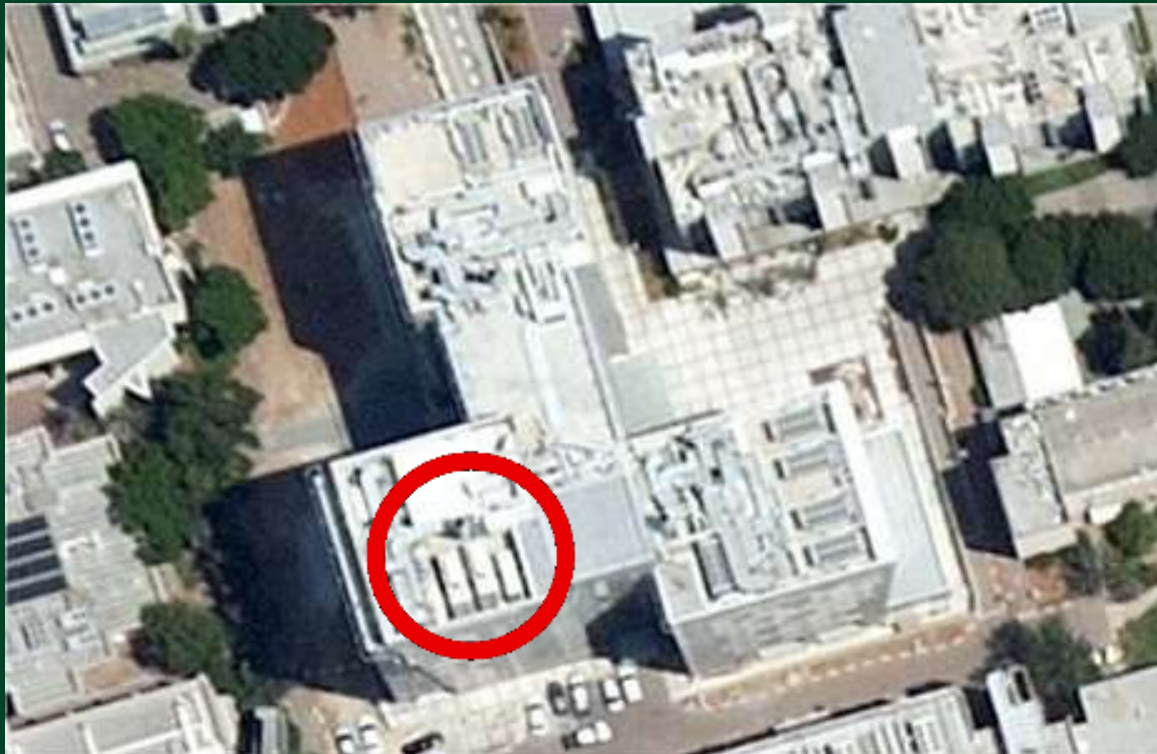
Nanotechnology triplex

Shelter in
Mamads.312 sqm.

Most protected space: Underground parking zone.

Places:
5,123 sqm.

Highlights: The Mamads are located in rooms B32, B131, B232, B332, B432, B530, B632, B731, B32, B932. Some of them need to be unlocked by the building management office (Tel. 7067)



Back >>

207

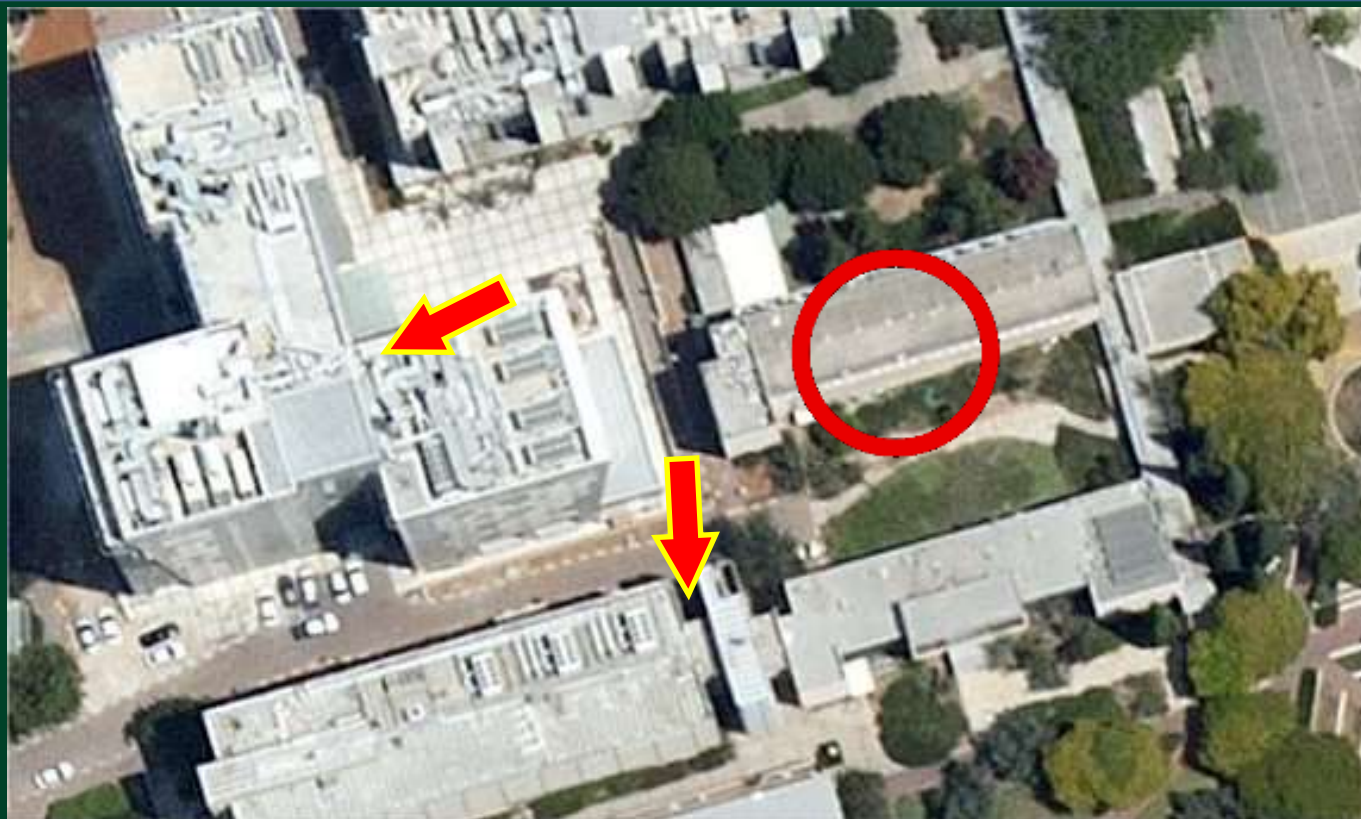
Carpel chemistry building

No Shelter at this location.

Most protected space: Lower floor corridor (near the toilet) far from the stairs, or shelters at Physics 202 or parking floor at Nano Technology 206.

Places: 11 sqm.

Highlights: None.



Back >>

208

Cancer research center

Shelter in ground level. 53 sqm.

Most protected space: Staircase leading to the basement and the machine room in the basement floor.

Places: 58 sqm.

Highlights: There is a ramp for the disabled that needs to be placed outside the shelter to close the door.



Back >>

209

Resnick advanced technology

Shelter in Mamads.
63 sqm.

Most protected space: Lab in the basement.

Places: 302
sqm.

Highlights: The Mamads are located in rooms 015, 106, and 204. They need to be unlocked by the labs managers.



Back >>

211

Lechter chemistry building

Shelter in ground level. 102 sqm.

Most protected space: Eastern corridor on the ground floor, or the eastern corridors 1st-2nd floors, western corridor on the 2nd floor or in the library in Mexico 213.

Places: 198 sqm.

Highlights: Shelters in rooms O13 & K2. They need to be unlocked by the labs managers.



Back >>

212

Suissa life science building

No Shelter at this location.

Most protected space: eastern corridors on 1st-3rd floors, or in the library in Mexico 213.

Places: 185 sqm.

Highlights: None.



Back >>

213

Mexico social science building

Shelter in the basement. 294 sqm.

Most protected space: west and east corridors on the 2nd – 3rd floor.

Places: 302 sqm.

Highlights: None.



[Back >>](#)

214

Schottenstein cellscan center

Shelter in the Mamads. 30 sqm.

Most protected space: Shelter in Finkler 208 or Mamads in Reznick 209.

Places:
none

Highlights: The Mamads (Room 011, 120 & 230) are in the south wing. The building is usually closed to the public and in time of emergency the front door should be coordinated to be opened.



[Back >>](#)

215

Energy center

No Shelter at this location.

Most protected space: Underground parking at Nano 206.

Places:
none.

Highlights: None.



Back >>

216

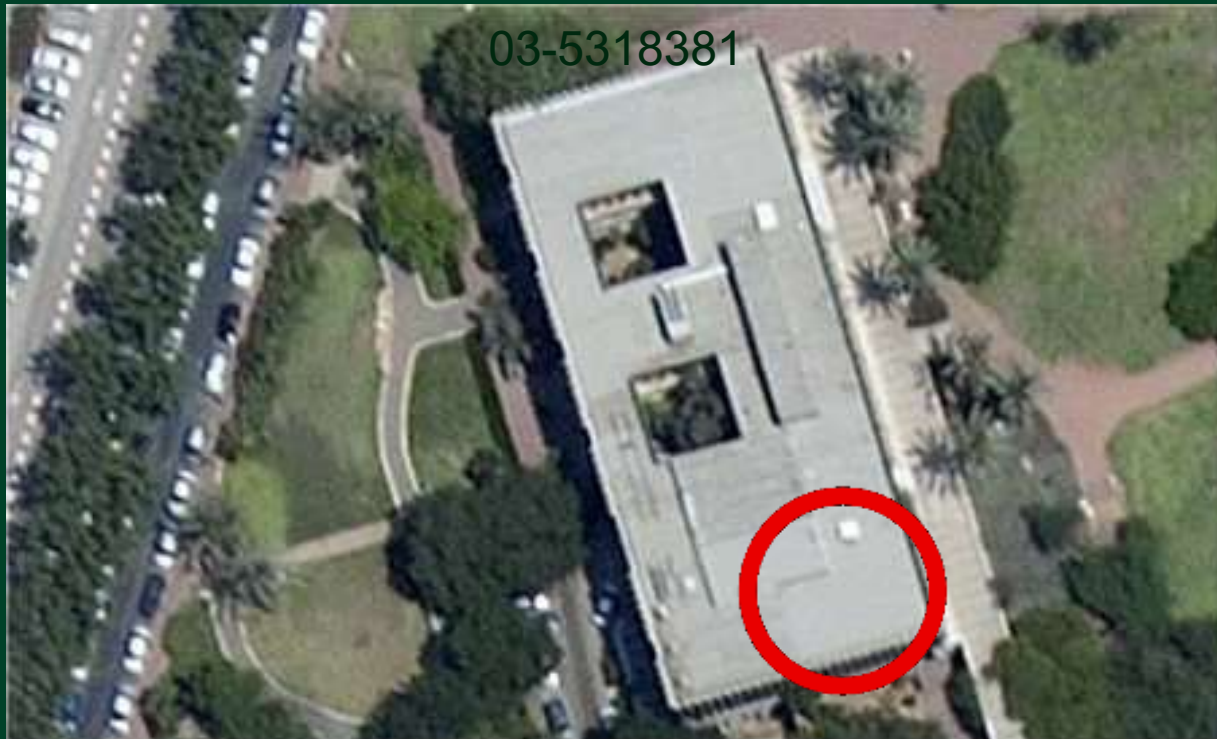
Mathematics & computer center

Shelter in the basement floor. 85 sqm.

Most protected space: The lower corridor in the southern building, or the parking floor at Nano 206.

Places: 66 sqm.

Highlights: Shelter is under construction, but it is still accessible. Opening the shelter by the maintenance team.



Back >>

217

The Begin Building

No Shelter at this location.

Most protected space: Corridor near the elevator on the basement floor (as opposed to the door).

Places: 11 sqm.

Highlights: Please stand near the western wall in the corridor and cover your head.



Back >>

300-1

Feldman conference center

Shelter in Mamad,
19 sqm

Most protected space: Western corridor at the PR area.

Places: 50
sqm.

Highlights: Mamad in room 012. In the congress hall there is no shelter.



Back >>

302

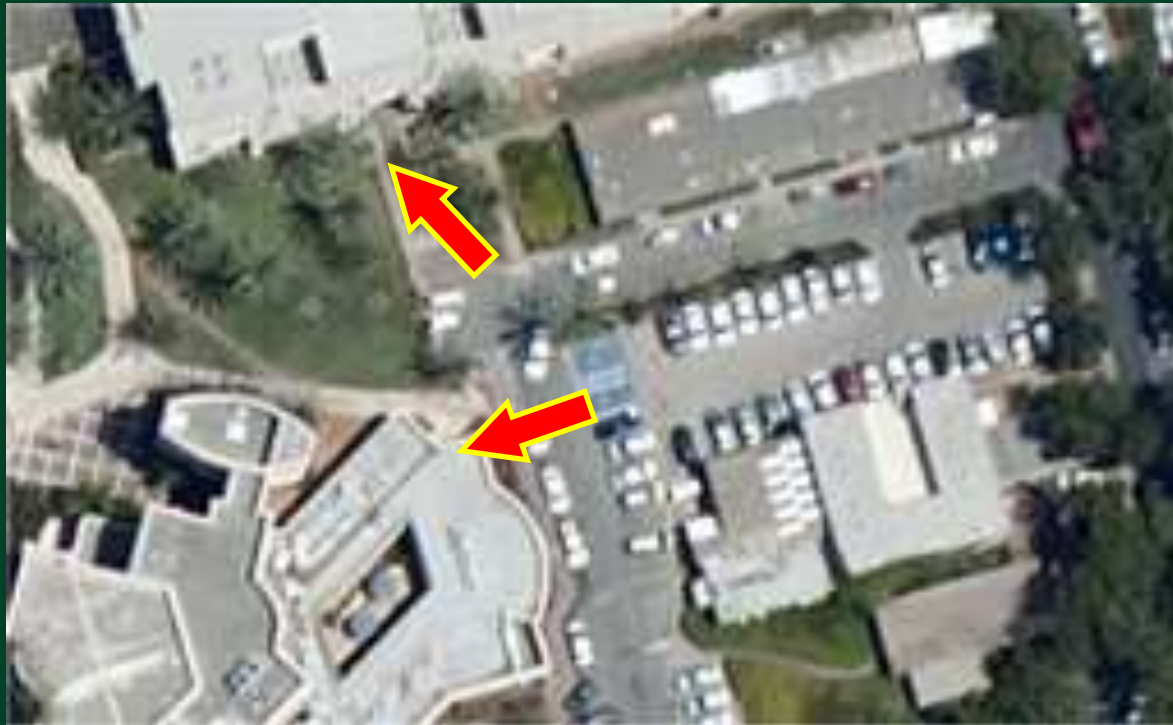
Logistics

No Shelter at this location.

Most protected space: East wing in the Logistics warehouse. Another option is a large room behind the synagogue.

Places:
none

Highlights: None.



Back >>

303

Maintenance

No Shelter in this location.

Most protected space: East wing in the Logistics warehouse. Another option is a large room behind the synagogue.

Places:
none

Highlights: None.



[Back >>](#)

304

Pollack (Shlifer) lecture hall

No Shelter at this location.

Most protected space: The security dept. basement floor that continues to operate. Another option is a large room behind the synagogue.

Places: 123 sqm

Highlights: Opening the back room in the synagogue by David from the Campus Rabbi office.



[Back >>](#)

305

Lohn law & commerce building

Shelter in library basement level, 185 places

Most protected space: East wing in the Logistics warehouse and the maintenance inner corridor in the basement.

Places: 300 sqm

Highlights: . Opening the logistics warehouse or the maintenance corridor should be coordinated.



Back >>

306

Benin real estate law wing

Shelter in Mamads,
33 sqm

Most protected space: Western staircase on the lower floors.

Places: 30
sqm

Highlights: Mamads are located in rooms 105 and 201. Opening those rooms should be coordinated.



Back >>

307

Wengrowsky “Lev Hacampus” observatory

No Shelter at this location.

Most protected space: Underground floors at Central library 401. There is also a protected place in the basement .

Places: none.

Highlights: None.



Back >>

401

Central library

No Shelter at this location.

Most protected space: Lower floors in the library and the 'open shelf' complex and the -2nd floor corridor.

Places: 871 sqm

Highlights: there is a 62 sqm shelter on the premises but it is not accessible to the public.



Back >>

402

Stollman administration building

No Shelter at this location.

Most protected space: Cover at the lower floor: 063 auditorium and the corridor that leads to it.

Places: 117 sqm

Highlights: None.



Back >>

403

Grosberg education building

No Shelter at this location

Most protected space: 1st and ground floor corridors or the shelter at Wolfson 404 basement.

Places: 93 sqm

Highlights: None.



[Back >>](#)

404

Wolfson hall of humanities

Shelter at the basement, 322 sqm

Most protected space: 1st and ground floor corridors at education building 403.

Places:
none

Highlights: Shelter is under construction, but it is still accessible
Coordinate opening the shelter via the maintenance or security depts.



[Back >>](#)

405

The Midrasha

Shelter at the Mamad, 14 sqm.

Most protected space: Shelter at basement of building 404, or the hallway at the archive compound.

Places: 29 sqm

Highlights: The Mamad is located to the northern area if the ground floor. Access to the archive compound only by the people working there.



Back >>

407

Rackman building (including Kucin, Finkle & Baker centers)

Shelter at the Mamads, 27 sqm.

Most protected space: None.

Places:
none.

Highlights: The Mamads are located at rooms 110 and 220. opening them should be coordinated. Room 1S is too small and cannot be used in emergency.



Back >>

408

Krok school of education

No Shelter at this location.

Most protected space: The chairs display at the basement or the Shelter at 404 building basement.

Places: 33 sqm

Highlights: Opening the basement should be coordinated With the procurement.



Back >>

409

Krok faculty house

No Shelter at this location.

Most protected space: A cleaning storage room at the basement or the Shelter at 404 building basement.

Places: 15 sqm

Highlights: None.



Back >>

410

Rappaport Jewish studies

Shelter at the basement floor, 349 places.

Most protected space: The basement lobby and the corridors that leads to it and the Beck auditorium

Places: 141 sqm

Highlights: Opening the lab located in the shelter should be coordinated with the archeology dept.



Back >>

411

Institute of advanced Torah studies

No Shelter at this location.

Most protected space: Access to shelters at Jewish studies 410 through the external staircase to the basement.

Places:
none

Highlights: Another way to 410 basement is through the Beck auditorium.



Back >>

501

Sobell sports center

Shelter at the safety storage, 25 sqm.

Most protected space: Exit to shelters at Katz 604 or Stern 605.

Places:
none

Highlights: opening the shelter should be coordinated with the safety dept.



Back >>

502

“Asbestonim”

No Shelter at this location

Most protected space: Head northeast to shelters at Katz 604 or Stern 605. Another option is the shelter inside class 25.

Places:
none

Highlights: None



Back >>

503

The Grass computer science building

Shelter at the Mamads, 172 sqm

Most protected space: The basement floor and staircases in the building can be used as a protected place. 85 sqm in the northern staircase, 93 sqm in southern, 171 sqm in basement.

Places: 349 sqm

Highlights: Mamads in rooms – basement near the stairs, 002 (ground floor), northern part (gallery), 113 & 127 (1st floor), 211 & 224 (2nd floor), 312 & 325 (3rd floor), 408 (Locked...) & 421 (4th floor)



Back >>

504

The Abraham center for economics

Shelter at the basement, 217 sqm.

Most protected space: The staircases and the corridors up to the 2nd floor.

Places: 505 sqm

Highlights: Opening shelter 61 & 62 should be coordinated with Logistics office. Access to this shelter is also available through the ladies WC at the ground floor.



Back >>

505

The Dahan Exodus classroom building

Shelter at the
basement, 125 sqm.

Most protected space: Basement floor corridor.

Places: 55
sqm

Highlights: None



Back >>

506

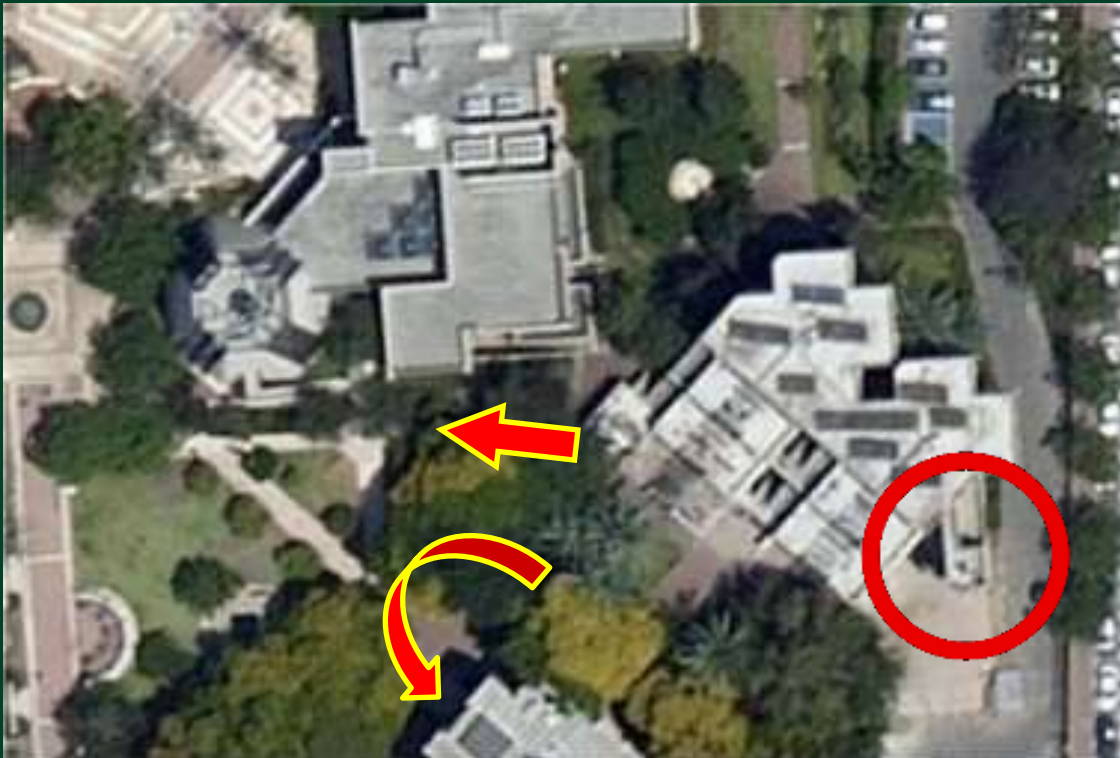
Electra's dormitories

No Shelter at this location

Most protected space: Shelters at Dahan 505 and Negel 507 buildings. Alternatively, the underground shelter in the east wing of the building (which includes toilets and showers).

Places:
around 200 sqm

Highlights: Electra has the keys to the gym complex. It is recommended to stay away from the mirrors installed on the walls of the complex.



Back >>

507

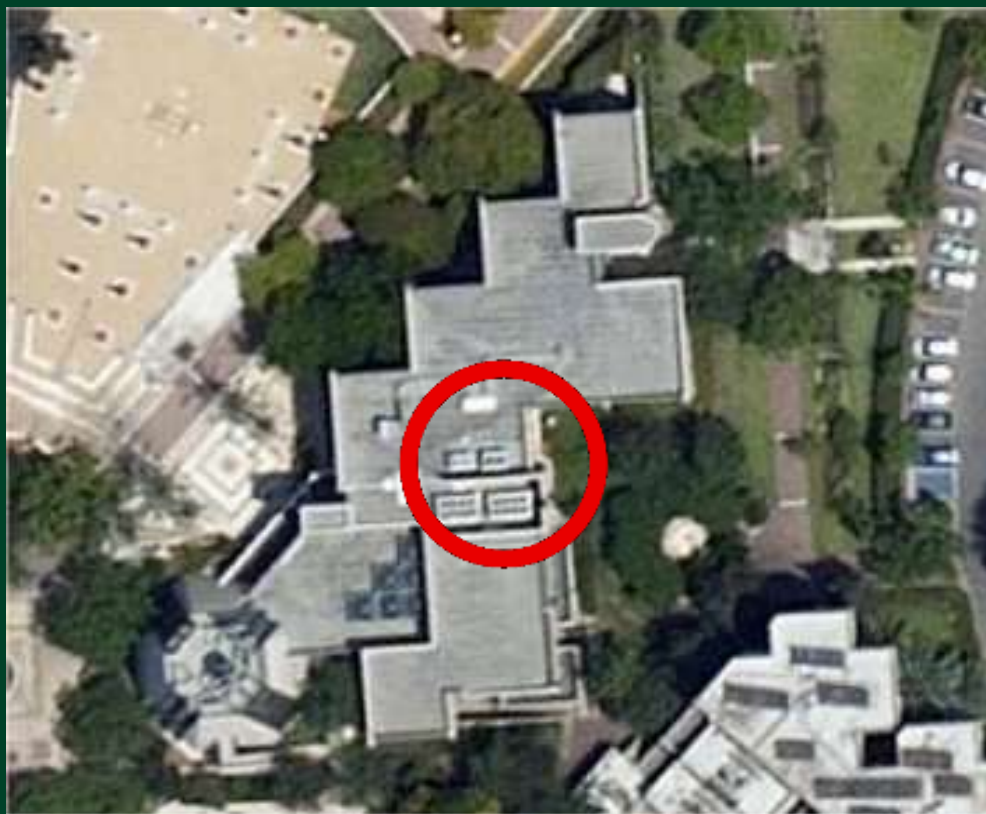
The Nagel Jewish heritage house

Shelter at the basement, 179 sqm

Most protected space: The basement floor and the technical space at the basement.

Places: 130 sqm

Highlights: None



[Back >>](#)

508-9

“Asbestonim”, Dean of students & Campus Rabbi

North shelter - 12
South shelter - 40
places

Most protected space: None

Places:
None

Highlights: The hallway in from of the south shelter (007) is not protected. The north shelter is located in the Dean’s office. One can get to the Katz 604 or Stern 605 shelters.



Back >>

604

The Katz interdisciplinary studies building

Shelter at the Mamads, 113 sqm

Most protected space: The basement floor corridor.

Places: 108 sqm

Highlights: The Mamads are at room numbers 016, 105, 205.



Back >>

605

The Stern graduate studies building

Shelter at the Mamads, 113 sqm

Most protected space: The basement floor corridor.

Places: 106 sqm

Highlights: The Mamads are at room numbers 016, 105, 205. Some of those Mamads need to be opened by the maintenance personals.



[Back >>](#)

802

The Weisfeld day care center

Shelter at the Mamad, 36 sqm

Most protected space: It's best not to try to reach nearby buildings as baby mobility might be slow.

Places:
none

Highlights: The Shelter maintenance is kept by the day care manager.



[Back >>](#)

901

The Gonda (Goldschmied) brain research center

Shelter at the Mamads, 112 sqm

Most protected space: The auditorium at the basement floor.

Places: 268 sqm

Highlights: The Mamads are available only to those who are permitted to enter the building. The Mamads are at rooms 213 and 413. Opening those rooms must be coordinate with the labs managers



Back >>

902

The Webb psychology building

Shelter at the Mamads, 75 places

Most protected space: There is a room near the secretarial section that can be used for protection and also the southern staircase

Places: 7 sqm

Highlights: The Mamads are at rooms 013, 108, 212, 324 and 420. Opening those rooms must be coordinate with the building technician.



Back >>

905

Jim Joseph education building

Shelter at the Mamads, 132 places

Most protected space: The auditoriums at the basement floor have external walls so they should not be used for protection. The east and west staircases are great for cover.

Places: 201 sqm

Highlights: The Mamads are at rooms 017, 120, 224, 324, 423 and 518. Opening those rooms should be coordinate with the faculty.



Back >>

906

TATAK Energy center

No Shelter at this location.

Most protected space: The IPI office and the hallway are totally underground and has thick ceiling so it can serve as a shelter.

Places: 28 sqm

Highlights: Opening the IPI office in coordination with the company.



Back >>

1002

Jakobovits-Shamoon centre

Study of philosophy, ethics & jewish thought

Shelter at the Mamads, 78 sqm

Most protected space: The staircases on the sides of the building are excellent and wide shelters.

Places: 259 sqm

Highlights: The Mamads are located at rooms 102 and 203. Opening Mamad 306 needs to be coordinated with the faculty.



[Back >>](#)

1004

The Kort language studies building

Shelter at the Mamads, 102 places

Most protected space: The staircases on the sides of the building are good for shelters. So is the kitchen at the basement floor.

Places: 189 sqm

Highlights: The Mamads are located at rooms 001, 101, 201,401 and need to be opened by the Faculty. Mamad 301 is usually open.



[Back >>](#)

1005

The Rosenberg music building

Shelter at the Mamads, 112 places

Most protected space: There is a staircase behind the stage that goes down to a dressing room which is wide and safe. There is also a shower and a WC there.

Places: 77 sqm

Highlights: The Mamads are located at rooms 018 and 110 that are usually open.



[Back >>](#)

110x

Engineering complex

Shelter at the Mamads, 294 sqm

Most protected space: The corridors leading from the lobby at the basement floor.

Places: 267 sqm

Highlights: The Mamads are located at (**basement**) 061, 071, 075, 081. (**ground**) 001, 021, 041, 051. (**1st** floor) 101, 121 and 141 (library), 161. (**2nd** floor) 201, 221, 241, 261. (**3rd** floor) 301, 321, 341 and 361.



Back >>

1501

The Dahan unity park

No Shelter at this location

Most protected space: The basement floor in the western side of the theater.

Places: 393 sqm

Highlights: The compound might be allocated for emergency purposes.



Back >>

1401

The Wohl centre

No Shelter at this location

Most protected space: A staircase behind the eastern elevator leads to the underground and protected basement floor.

Places:
more than
300 sqm

Highlights: None.



Back >>

1300

A + B

Park 100 – Student's dormitories

No Shelter at this location

Most protected space: An underground tunnel that connects to two buildings is the best place to find cover. It can be reached via the staircases

Places:
more than
1,200 sqm

Highlights:

Building A – Mamads in rooms X18 or X52 and clubs X18.

Building B – Mamads in rooms X04 or X32 and clubs X04.

The shelters clubs are marked by these signs



Back >>